

Case Study

Hungarian vineyard register (VINGIS)

Ministry of Agriculture and Rural Development, Hungary
FÖMI Remote Sensing Center, Hungary

Keywords: Register, Vineyard, Acquis communautaire, CAP

Description of Application

In order for Hungary to be eligible for the European Union (EU) funds, the MARD, as the coordinating institute of the wine-sector, is required to set up a vineyard based up-to-date database covering all the winegrowing areas of Hungary.

A task list has been therefore developed within the frame of the National Program of Adoption of the Acquis communautaire. One of the main goals of this program (Department of Lands and Mapping, Ministry of Agriculture and Rural Development / FÖMI National Program of Adoption of the Acquis I/A/5 "GI infrastructure Development of the Vineyard Register on the Basis of the Current Register of the Vineyard Communities") is to develop the GIS based data structure of the Vineyard Register in accordance with the present and future national and EU requirements.

Benefits:

According to Council Regulation (EC) No1593/2000, the Member States are advised to keep the records of the agricultural parcels, including vineyards, in GIS, at the latest from the 1 of January 2005.

From the EU point of view, the most important question is whether the administrations of the Member States are prepared to follow and make the agricultural subsidies of the wine-sector (distillation-, restructuring premiums, production quota management) controllable by the use of GIS.

Issues:

In the first phase of the project (2001-2002) approximately 20% of the total area was covered, including 4 wine-growing regions, 48 vineyard communities and 70 settlements. The second phase (2002-2003), which is now nearing completion, covers 6 wine-growing regions. In conjunction with the National Orthophoto Program, we are planning to extend our resources with the use of orthophotos, in order to increase the accuracy of the register.

The planned national extension of the project already includes the first updates (31st May is the date of the annual update), the preparation for the integration of the orthophotos, which are strongly recommended by the EU, and the creation of regional summaries on the level of winegrowing-, and wine regions.

Data Used:

In the already covered vineyard communities, we installed a map-viewer program with a map package, including the vector layers of the vineyards with the attached database, and in one vineyard community in each winegrowing region, as an experiment, we also added the Slope-, Aspect-, Height Interval maps and the map of the potentially eligible areas for winegrowing.

Relevant background information: Progress towards countrywide coverage

Designation	Phase 1 (2000-2002)	Phase 2 (2002-2003)	Phase 3 (2003-2004)
Wine growing regions	Eger Matraalja Villany	Etyek-Buda Balatonboglar Sapron Somla Badacsony	Csongrad Hajos-Baja Kunsag Aszar-Neszmely Balatonfelvidek Mor Mecsekalja Tokaj Balatonmellek
Degree of Completion	20%	45%	100%

For more information please write:

martinovich@rsc.fomi.hu or visit www.fomi.hu.

Case Study

Funding:

Total cost of the works:

in 2001: 10 million Ft (source: MARD- ANP/VIII/A/6 EU Harmonisation programme)

in 2002: 25 million Ft (source: MARD- ANP/I/A/5 EU Harmonisation programme)

in 2003: 50 million Ft (source: MARD- ANP/I/A/5 EU Harmonisation programme)

in 2004: 45 million Ft (source: MARD- ANP/I/A/5 EU Harmonisation programme)

Number of FÖMI staff participating in this work on a part-time job basis: **30**

Case Study

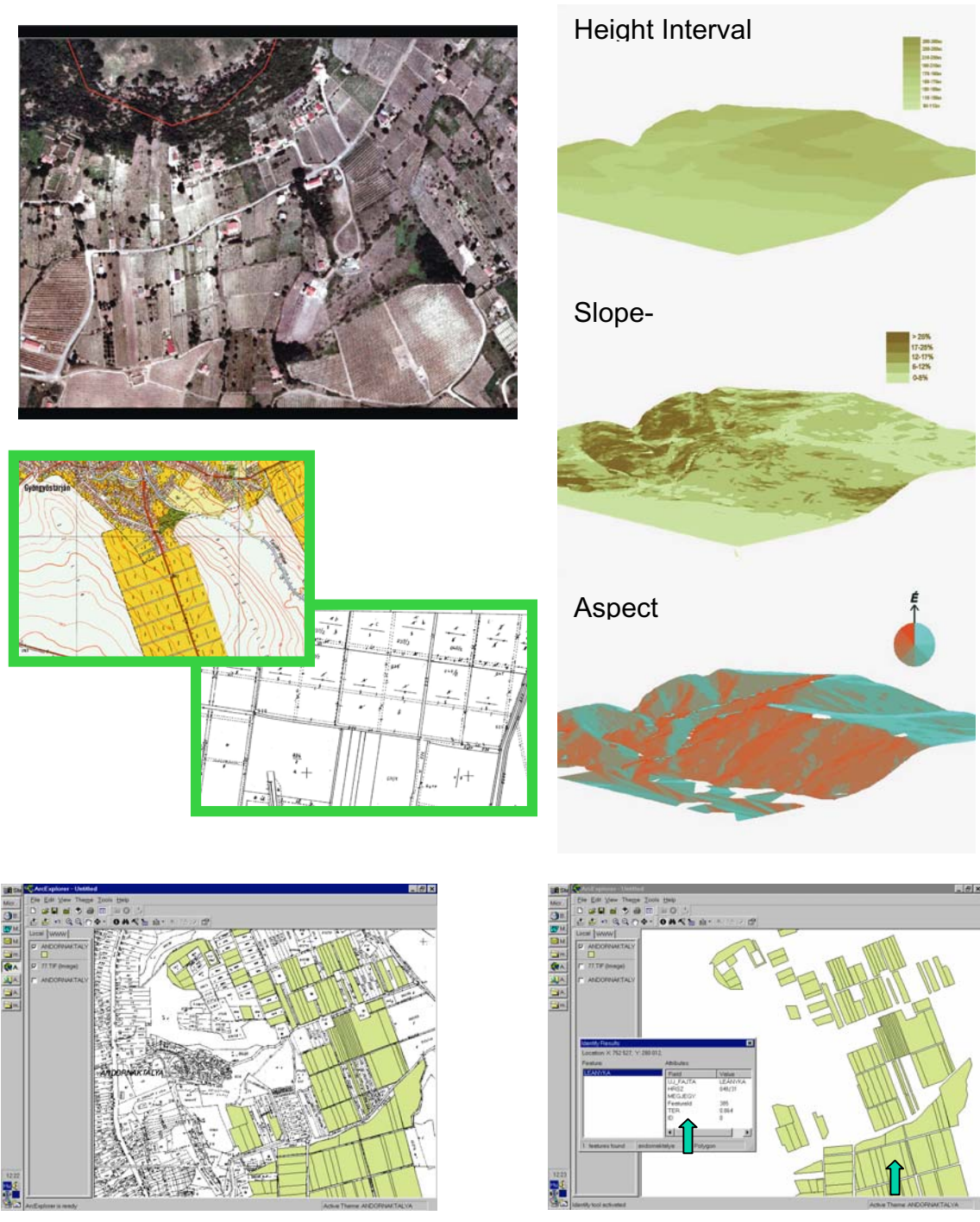


Fig. 1: The Required Layers (vector layer and the database of vineyards) that the Vineyard Communities are Receiving in the Initial Phase of the VINGIS Project